

eruption

cgi

wave convertible

Performance Characteristics:

The Eruption: Developed for off-, on- and side-shore wave locations. It excels in the waves due to new shape details, such as a highly developed distribution of volume for high jumps and exact bottom turns. The typical round rocker line is smoothened up front, for control when riding down the face and speed for heading out through the break. The aggressive nose kick allows extreme maneuvers in all situations. The free planing area makes this board a real play board, even when the waves are mast high and mistakes are painful.

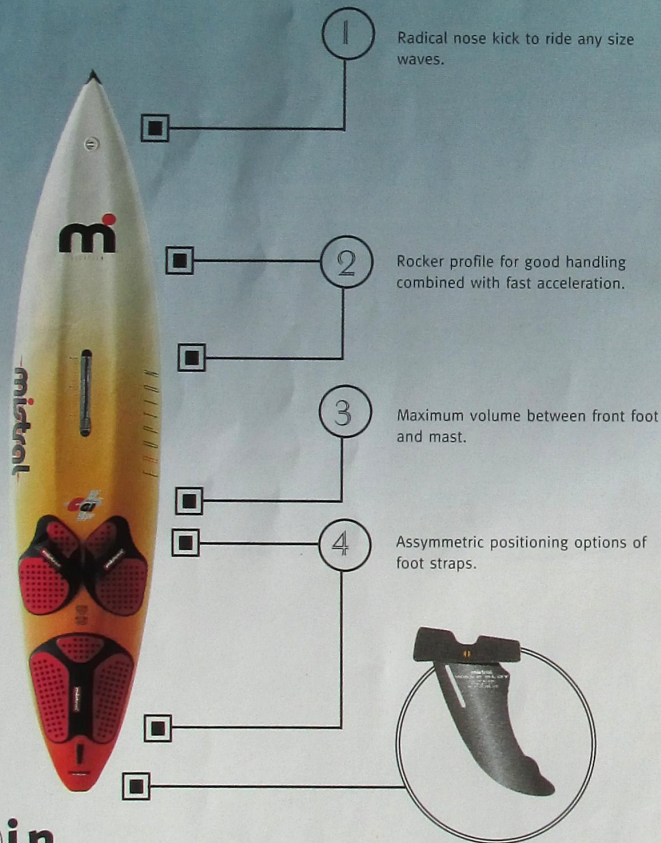
Board

Trilogy Recommendation:

CGI: The robust Eruption is capable of the most radical moves in the wildest situations.

Measures:

Length: 257 cm/8'6"
 Width: 55,5 cm/21,9"
 Weight: CGI: 7,6 kg/16,7 lbs.
 Volume: 78 liters



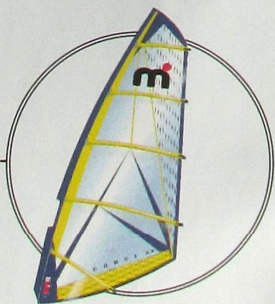
Fin

Wave Slot 230 - 250: ideal fins for any use in the waves.



Sail

Curve: 3.7 - 5.2 for high performance in waves.
Round: 4.3 - 5.7 for all waves, large or smooth.



These suggestions can vary depending on the location and the ability of the surfer. Further information can be found at your local authorised Mistral dealer.

electron

cgi/chs

wave convertible

Performance Characteristics:

A real convertible for wave and slalom conditions with an innovative rocker line, which means the board starts planing quicker. The shape of the tail allows extreme turns just like a wave board. The sharp, narrow nose and the not so extreme rails promise perfect control in various conditions. Through the variation of the footstraps, mastfoot position and appropriate fin, the Electron can be converted from a wave playboard to an arrow fast slalom-board.

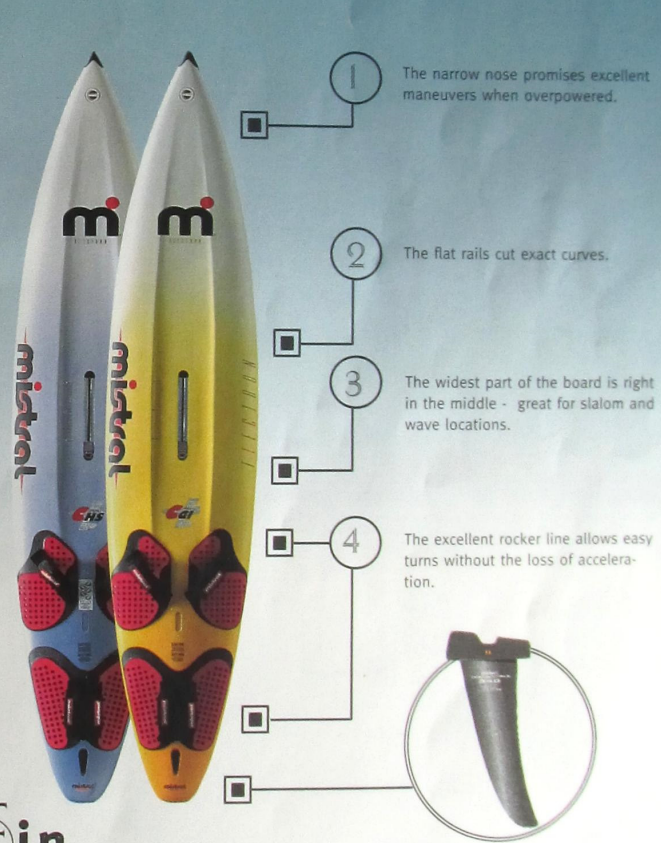
Board

Trilogy Recommendation:

CHS: The light weight for speed in choppy and flat water.
CGI: The extremely robust CGI version allows aerials in the wave and is ideal for bump and jump conditions.

Maße:

Length: 263 cm/8'7"
 Width: 54,3 cm/21,3"
 Weight: CHS: 6,9 kg/15,2 lbs.
 CGI: 7,8 kg/17,2 lbs.
 Volume: 88 liters



Fin

Wave/Slalom 250: for both strong wind and waves.

Convertible 280 - 310: fins for controlled highspeed



Sail

Straight: 4.8 - 5.8 for boundless acceleration and top speed.
Curve: 4.2 - 5.7 for moderate wave locations and strong wind.
Round: 4.3 - 5.7 for easy maneuver handling and allround use.



These suggestions can vary depending on the location and the ability of the surfer. Further information can be found at your local authorised Mistral dealer.

screamer II

wave convertible

cgi/chs

Performance Characteristics:

The Screamer II is the successor to the legendary Screamer. This board has all the characteristics required to be classified as a true convertible. Its shape was reconstructed to match the most modern rigs, whereby its performance was dramatically improved. The Screamer II's outline, narrow nose, tail and V shaped underwater section gives it a combination of high speed and extreme maneuverability. This board is more than just a convertible.

Board

Trilogy Recommendation:

CHS: The light weight version gives early planing, speed and controllability.

CGI: The more robust CGI is better for moderate waves and rough seas.

Measures:

Length: 280 cm/9'2"
Width: 55 cm/21.6"
Weight: CGI: 8,4 kg/18.5 lbs.
CHS: 7,3 kg/16.1 lbs.
Volume: 103 liters



- 1 Reduced volume in the nose and a round harmonious outline for maximum maneuvering fun.
- 2 The V in the under water section allows maneuvers without loss of board speed.
- 3 Mastrack, footstraps, fin position realigned to match modern rigs.
- 4 The narrow tail makes the board turn nice and easy.



Fin

Race 300 - 360: Ideal fin for high-speeds on flat water.

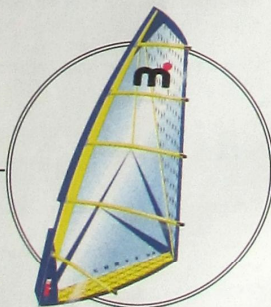
Convertible 310 - 340: The perfect fin for maneuvers and typical bump and jump conditions.

Sail

Straight: 4.8 - 6.8 for high speed and free sailing.

Curve: 4.2 - 5.7 the optimal playboard combination for maneuver freaks.

Round: 5.0 - 6.4 the ideal allround sail for slalom first timers.



These suggestions can vary depending on the location and the ability of the surfer. Further information can be found at your local authorised Mistral dealer.

echo

wave convertible

cgi/chs

Performance Characteristics:

The Echo shines for first-time boarders as an early planer that is astonishingly easy to sail and which gybes without problem. The balanced reduction of the nose volume gives the surfer a real slalom feeling and offers high end speeds combined with good control. Due to the flat underwater section together with the high volume in the tail, the board planes fast. The Echo's high volume makes the board very stable, perfect for polishing those gybes.

Board

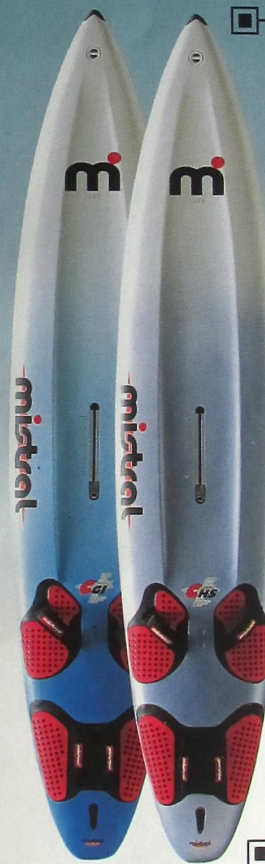
Trilogy Recommendation:

CHS: The reduced weight gives enormous slalom acceleration.

CGI: The stable CGI version makes the board good for slalom board beginners.

Measures:

Length: 298 cm/9'9"
Width: 59,2 cm/23,3"
Weight: CHS: 8,5 kg/18,7 lbs.
CGI: 9,3 kg/20,5 lbs.
Volume: 138 liters



- 1 The moderate distribution of the volume in the nose area allows easy control even at top speeds.
- 2 The mid positioned wide-point gives balance and stability.
- 3 The parallel outline gives smooth directional stability.
- 4 The modern outline with a flat wetted area makes the board stable and easy to maneuver.



Fin

Convertible 340 - 360: this fin allows astonishingly early planing in light winds.

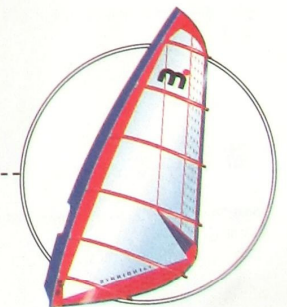
Wave/Slalom 320: the optimal fin for all-round performance, easy maneuvers and uncomplicated planing fun.

Sail

Straight: 5.3 - 7.3 for flat water surfing in light to middle wind.

Curve: 5.2 - 5.7 for easy handling in high winds and small waves.

Round: 5.0 - 6.4 good allround characteristics for first-time slalom boarders.



These suggestions can vary depending on the location and the ability of the surfer. Further information can be found at your local authorised Mistral dealer.

edge chs/cgi

Performance Characteristics:

The Edge, the ideal strong wind board with great acceleration and super top-end speed characteristics. This board surprised even the designers with its unbelievable top-end speed. The board's narrow front and slim outline give better control in strong winds and allow the user to use the newest sail and most up to date fin designs. Due to the rounded pin tail and its perfectly graded rockerline, the Edge is easily controlled in high-speed gybes.

Board

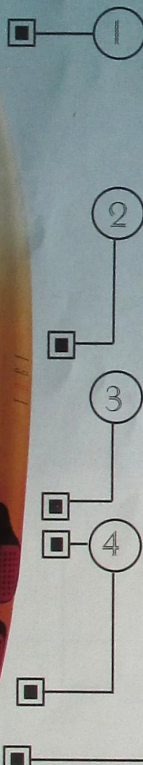
Trilogy Recommendation:

CHS: The light weight guarantees perfect acceleration. Ideal for race freaks.

CGI: The stability and controllability are the strengths of this robust construction.

Measures:

- Length: 268 cm/8'9"
- Width: 54.5 cm/21.3"
- Weight: CGI: 7,9 kg/17.4 lbs.
CHS: 7,1 kg/15,6 lbs.
- Volume: 92 liters



1 The moderate nose shape make the board totally controllable in rough water and strong wind sailing because ...

2 ... the widest point of the board is to the front of the mid section.

3 The light V shape in the flat under water section allows top speeds and directional tracking.

4 The ideal rocker line makes the board controllable even at high speeds.

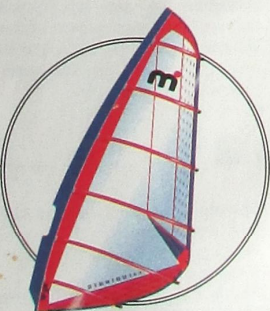


Fin

Slalom 280 - 310: ideal for speed and control.

Sail

Straight: 4.8 - 6.3 for maximum speed and race performance.



These suggestions can vary depending on the location and the ability of the surfer. Further information can be found at your local authorised Mistral dealer.

energizer chs/xr

Performance Characteristics:

A race slalom board, with unbelievable acceleration and with very high top end speeds. The narrow, moderate nose with parallel rails allows astonishing control in strong and middle winds, in rough or choppy water. Due to the long rocker line and the well planned volume distribution, the Energizer planes easily and guarantees control.

Board

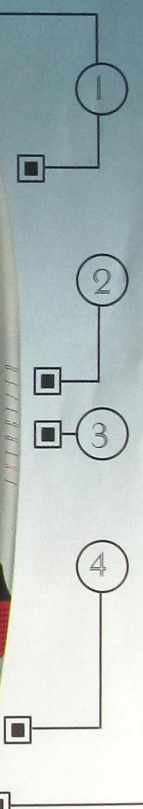
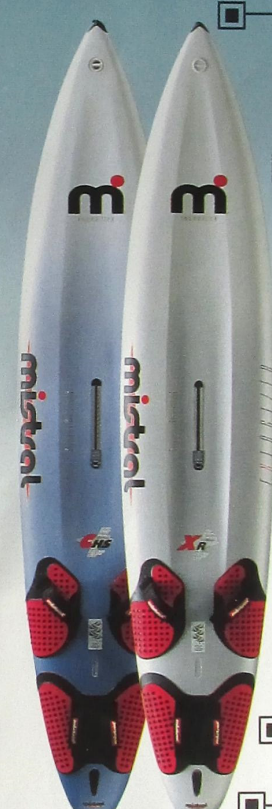
Trilogy Recommendation:

XR: Ultra light version for ambitious racers and maximum speed.

CHS: The stable CHS version combines good acceleration and speed.

Measures:

- Length: 278 cm/9'2"
- Width: 55 cm/21.7"
- Weight: XR: 6,8 kg/15 lbs.
CHS: 7,8 kg/17,2 lbs.
- Volume: 110 liters



1 Due to the well balanced volume in the nose area, the Energizer has the best control even at high speeds.

2 The flatter rocker line allows speed and maximum control on all race courses.

3 Due to the parallel rails the Energizer points very high.

4 The squash tail makes the board accelerate smoothly and reduces spin out problems.

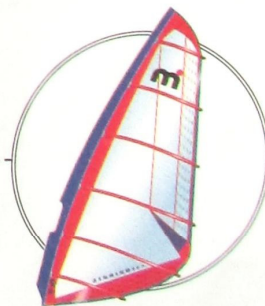


Fin

Race 310 - 360: fins for quick acceleration and good pointing.

Sail

Straight: 5.3 - 6.8 for top speed in flat or choppy water.
Round: 5.0 - 6.4 for allround use in medium to strong winds.



These suggestions can vary depending on the location and the ability of the surfer. Further information can be found at your local authorised Mistral dealer.

explosion II

race slalom

chs/xr

Performance Characteristics:

The new moderate to light-wind slalomboard. The square-tail brings early lift and quick planing on all courses. The slight V and redefined rockerline, combined with reduced volume in the nose provide control and maneuverability. The parallel rails, in combination with the tucked-under edges guarantee great bite when charging upwind.

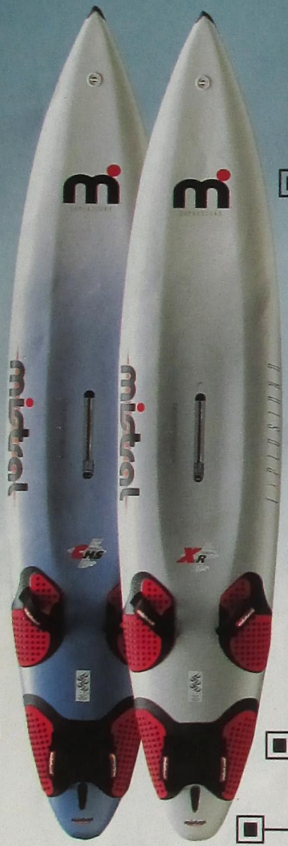
Board

Trilogy Recommendation:

XR: Extremely light competition board for regatta surfers.
CHS: Allround performance in the slalom class for every surfer.

Measures:

Length: 288 cm/9'4"
 Width: 58 cm/22.8"
 Weight: XR: 7,1 kg/15,6 lbs.
 CHS: 8,2 kg/18,1 lbs.
 Volume: 120 liters



- 1 Reduced volume nose for good control in extreme conditions.
- 2 Parallel outline for maximum speed while pointing.
- 3 Long rocker line for best planing through wind holes.
- 4 Square-tail for good lift, early planing and easy jibing.

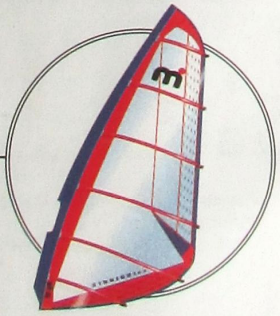


Fin

Race 360 - 380: ideal fins for limitless speed in all wind situations.

Sail

Straight: 5.8 - 7.3 for unbelievable top end-speed with race characteristics.
Round: 5.0 - 6.4 for slalom-freaks and free-time surfers.



These suggestions can vary depending on the location and the ability of the surfer. Further information can be found at your local authorised Mistral dealer.

equipe II

race slalom

chs/xr

Performance Characteristics:

World wide regatta champion, as in the exciting Hiho '95. The Equipe starts planing at even 6 knots of wind and converts stronger wind to pure speed. In almost every regatta the Equipe proved it is unbeatable in light wind and while pointing. Due to the harmonic shape with the rounded tail and very high volume, acceleration at bouys and close gybes are easy. This board is also the most ideal touring board and copes with constant changes of wind.

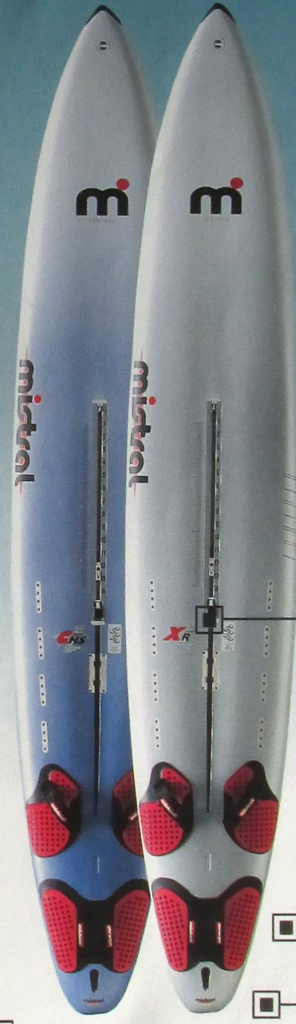
Board

Trilogy Recommendation:

XR: Due to the innovative Mistral technology the Equipe's weight-to-volume ratio is without peer.
CHS: Light, stiff and robust.

Measures:

Length: 375 cm/12'4"
 Width: 66 cm/26"
 Weight: XR: 12,6 kg/27,8 lbs.
 CHS: 13,8 kg/30,4 lbs.
 Volume: 258 liters



- 1 The concave deck improves longitudinal stiffness and volume distribution.
- 2 The steep, slab rails allow for unbelievable pointing ability.
- 3 The well sealed centreboard case allows a maximum of speed while beating.
- 4 The broad, lightly V shaped and tail allows for unbelievable maneuvering.

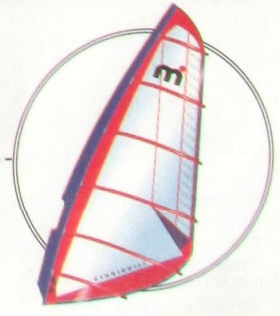


Fin

Race 380: fins for early planing and good pointing, even in light winds.

Sail

Straight: 5.8 - 7.3 for boundless high speeds and control in strong winds.



These suggestions can vary depending on the location and the ability of the surfer. Further information can be found at your local authorised Mistral dealer.

evolution cgi

leisure

Performance Characteristics:

The light wind board with built in safety measures for newcomers in the slalom class. The Evolution offers support when learning new maneuvers or when tacking back in failing wind. Due to its modern shape, its flat under water section and smooth distribution of volume, the fun of planing begins early. Instead of using the centreboard you can place the Mistral airbag into the centreboard well. This saves weight and avoids turbulence around the slot flushers. The result: pure slalom speed.

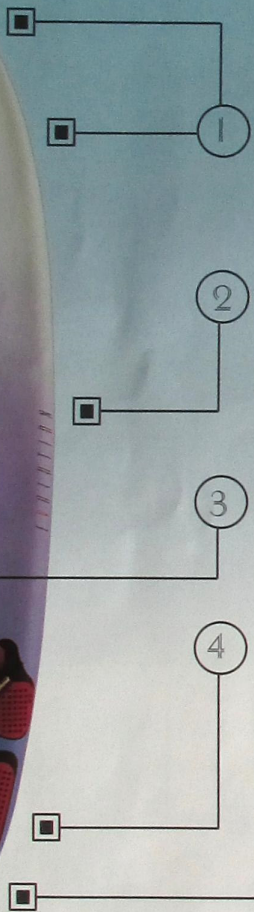
Board

Trilogy Recommendation:

CGI: This robust board tolerates the extremest demands.

Measures:

Length: 310 cm/10'2"
Width: 63,5 cm/25"
Weight: 10,9 kg/24 lbs.
Volume: 149 liters



1 The volume distribution together with the tucked under edge rails allow for easy gybes and tacks.

2 The generous volume brings additional stability.

3 The centre board, which can be removed for extra fast sailing, offers both added security and high pointing in light winds.

4 The broad tail allows for comfortable maneuvers, without the loss of speed and fast early planing.



Fin

Wave/Slalom 320: the ideal, maneuver friendly fin for allround use.

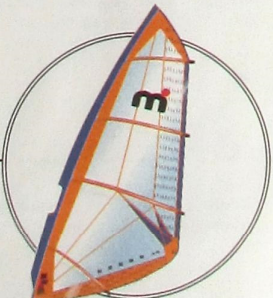
Convertible 360: the perfect fin for race speed and pointing.

Sail

Straight: 5.8 - 7.3 for speed and flat water surfing.

Round: 4.3 - 6.4 for first time slalom boarders and allround surfers.

School & Kids: Youngsters will love windsurfing on this board.



These suggestions can vary depending on the location and the ability of the surfer. Further information can be found at your local authorised Mistral dealer.

malibu s cgi

leisure

Performance Characteristics:

High speed planing, easy in maneuvers, mistake friendly, and good stability were the main thoughts when designing this board, without tearing out its sporty character. The modern shapes allows fast planing and gybes with a slalom-board feeling. Perfect for heavyweight surfers who want to improve their maneuvers, but also for light weights who want a multi-dimensioned board, even after their first course, that offers continued fun.

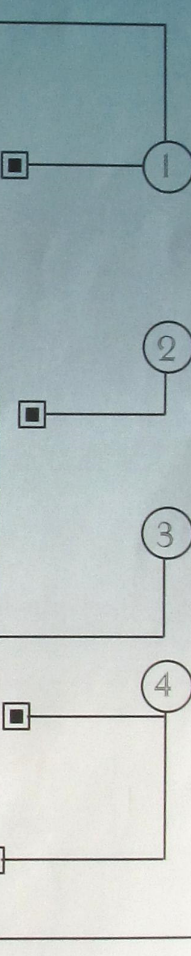
Board

Trilogy Recommendation:

CGI: A robust and but light board, easy to transport.

Measures:

Length: 330 cm/10'8"
Width: 61,5 cm/24"
Weight: 12,4 kg/27,3 lbs.
Volume: 170 liters



1 The soft rails allow smooth and easy gybing with additional flotation.

2 The modern shape brings stability and easy uphauling of the rig.

3 The centerboard allows high pointing.

4 The broad tail gives additional volume to plane earlier and turn easier.



Fin

Wave/Slalom 320: the best fin for easy going maneuvers.

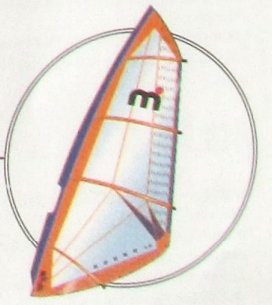
Convertible 360: the optimal fin for speed, planing and pointing.

Sail

Straight: 5.8 - 7.3 for quick acceleration and flat water speed.

Round: 4.3 - 6.4 for easy rigging and uncomplicated fun while surfing.

School & Kids: a perfect combination.



These suggestions can vary depending on the location and the ability of the surfer. Further information can be found at your local authorised Mistral dealer.

escape

cgi

Performance Characteristics:

The Escape has the volume and stability of a long board yet the planing and speed abilities of a fun board. The variable footstrap positions and comfortable pads turn the board into an all-round fun board for new maneuvers when the straps are placed forward and, when the footstraps are placed back, the Escape becomes a speed machine. The board is perfect to improve maneuvers like gybes, tacks, waterstarts, and brings the whole family fun. For sporty sailors, this is the board.

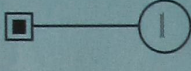
Board

Trilogy Recommendation:

CGI: A board with a huge range of use, from entry level, to families & sporty surfers.

Measures:

Length: 345 cm/11'3"
Width: 65 cm/25,6"
Weight: 13,4 kg/29,5 lbs.
Volume: 190 liters



1 Due to its well placed volume the Escape is for learning gybes and tacks.



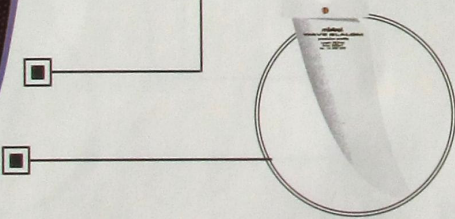
2 The round, soft rails are perfect for longboard freestyle and slalom board maneuvers.



3 Due to the wide range of footstrap placement possibilities, the Escape offers both slalom and longboard characteristics.



4 The high volume in the allows for fast acceleration, high speeds and excellent gybing characteristics.



Fin

Wave/Slalom 320: the easy to turn fin for allround surfers.

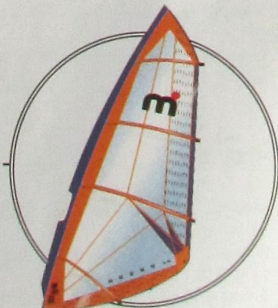
Convertible 360: perfect fin for fast early planing and performance when beating upwind.

Sail

Straight: 5,8 - 7,3 for fast acceleration and good slalom speed.

Round: 4,3 - 6,4 for easy rigging, surfing and handling.

School & Kids: best suited for beginners and future Robby Naish!



These suggestions can vary depending on the location and the ability of the surfer. Further information can be found at your local authorised Mistral dealer.

competition

cgi

Performance Characteristics:

The Competition is, due to its long life and easy surfing, the board most loved by schools. It is the only entry level board on the market, which is built with a very light weight construction. Its volume of 250 litres gives even the heaviest surfer enough lift to uphaul his sail. The tail rocker and the round rails allow easy gybing and tacking. Easy and fast planing is child's play.

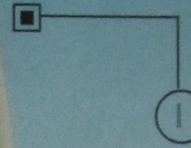
Board

Trilogy Recommendation:

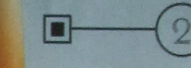
CGI: A very robust construction for beginners.

Measures:

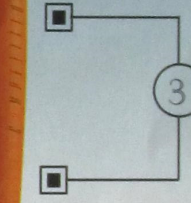
Length: 380 cm/12'5"
Width: 70 cm/27,5"
Weight: 17 kg/37,5 lbs.
Volume: 250 liters



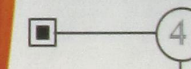
1 Round rails are ideal for freestyle and for learning tacking and gybing.



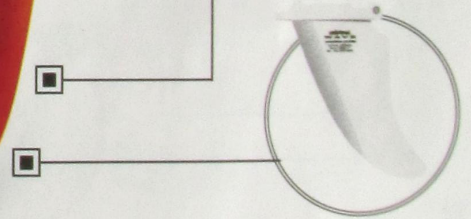
2 The placement of the volume makes uphauling the sail easy.



3 The triple concave under water section makes planing easy even with light winds.



4 The easy to turn tail makes gybing and tacking really comfortable.



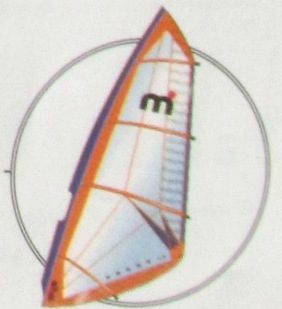
Fin

Competition 280: this easy to turn fin allows gybing and tacking to be learnt with ease.

Sail

Round: 4,3 - 6,4 allround sails for easy handling.

School and kids: Ideal entry level and school rig for kids and grown ups.



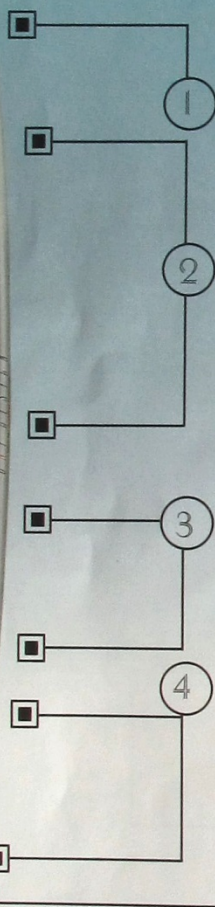
These suggestions can vary depending on the location and the ability of the surfer. Further information can be found at your local authorised Mistral dealer.

one design

Performance Characteristics:

One thing is sure - with this board you can win gold! The One Design is the official regatta board of the IMCO (International Mistral Class Organisation) and its regattas all over the world, of the Olympic qualifiers and the Olympic Games themselves in Atlanta '96. In all these races, the same material is used by all contestants so that personal ability is measured, not the equipment. The board planes early and beats fabulously upwind, turns easily and reaches maximum speed even in low wind conditions. This means having fun whether cruising or in the thick of a regatta battle!

Board



Trilogy Recommendation:

UDS: A robust board with a very long life. Light enough for Olympic Regattas.

Measures:

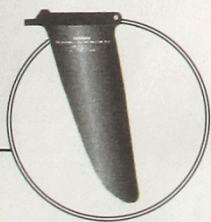
Length: 372 cm/12'2"
Width: 63,5 cm/25"
Weight: 15,5 kg/34,2 lbs.
Volume: 235 liters

1 The vertical rails and sharp edges allow optimal planing and beating upwind.

2 The long parallel rail outline allows for extreme smoothness when beating and racing.

3 The variable footstrap positions and the adjustable mast track guarantee fine tuning on all legs of a course.

4 The quattro-concave under-water section planes early in light winds.



Fin

One Design 340: the only fin allowed for IMCO and Olympic Regattas.

Sail

IMCO Segel: 5.9 - 7.4 official class sails for IMCO regattas, can also be used for light wind planing with all Mistral long and fun boards.



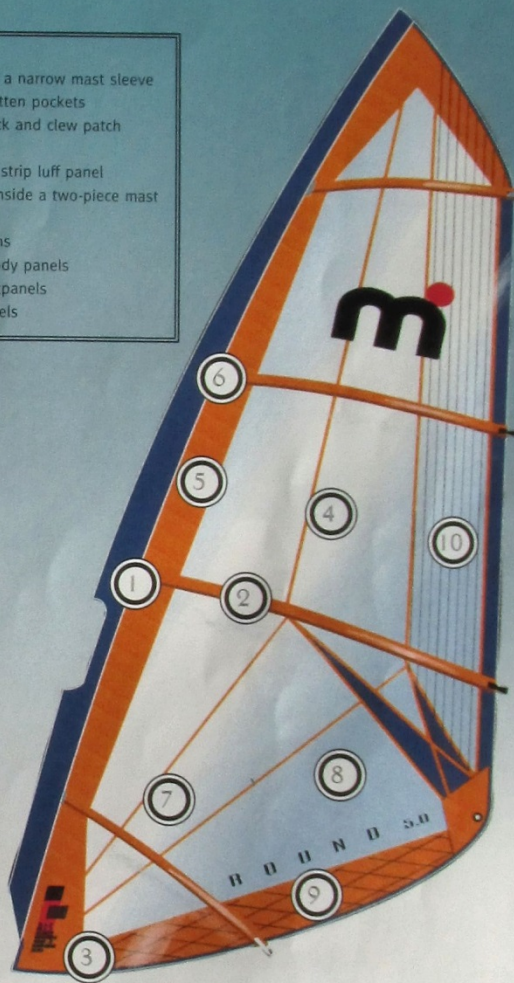
round

Performance Characteristics:

The Round was designed especially for those surfers who want a versatile sail without having to buy a special sail for special occasions. Also the Round has high tech materials like Tri Ply Scrim in the foot and warp scrim in the luff. The modern shape with internal mini cambers brings early planing and high speed; the narrow mast sleeve and the minimum number of battens guarantee uncomplicated handling and good maneuver abilities. The lightly twisted profile allows good control and a high center of effort stability in stronger winds. The numerous trim possibilities allow a versatile use, which means the choice of size and sail type is made easy.

Sail Features:

1. Mini-cams inside a narrow mast sleeve
2. Double-sided batten pockets
3. Double-sided tack and clew patch
4. Tri-ply seams
5. Reinforced front strip luff panel
6. Seam webbing inside a two-piece mast sleeve
7. Multi-radial seams
8. 175 monofilm body panels
9. Tri-ply scrim footpanels
10. Warp scrim panels



Changing Characters*:

Style	Euro-Wave	Wave/Slalom	Fun/Slalom	Slalom
Size	4-3	5-0	5-7	6-4
Battens	4	4	5	5
Cams	-	1	1	1
Boom/cm	161-163	173-175	185-187	197-199
Mast/cm	399-401	435-437	462-464	477-479

Mast-Recommendations*:

4-3, 5-0	IMCS Constant Curve 24	Carbon/Glass 430
5-7, 6-4	IMCS Constant Curve 25	Carbon/Glass 460

Boards*: Because of the changing characteristics of the Round sails, Mistral recommends these sails for the CGI boards. Refer to board pages for the sail sizes recommended for your board.

* Recommendations may vary depending on your local conditions and windsurfing ability. For more detailed information, consult with your local authorized Mistral dealer.

These suggestions can vary depending on the location and the ability of the surfer. Further information can be found at your local authorized Mistral dealer.

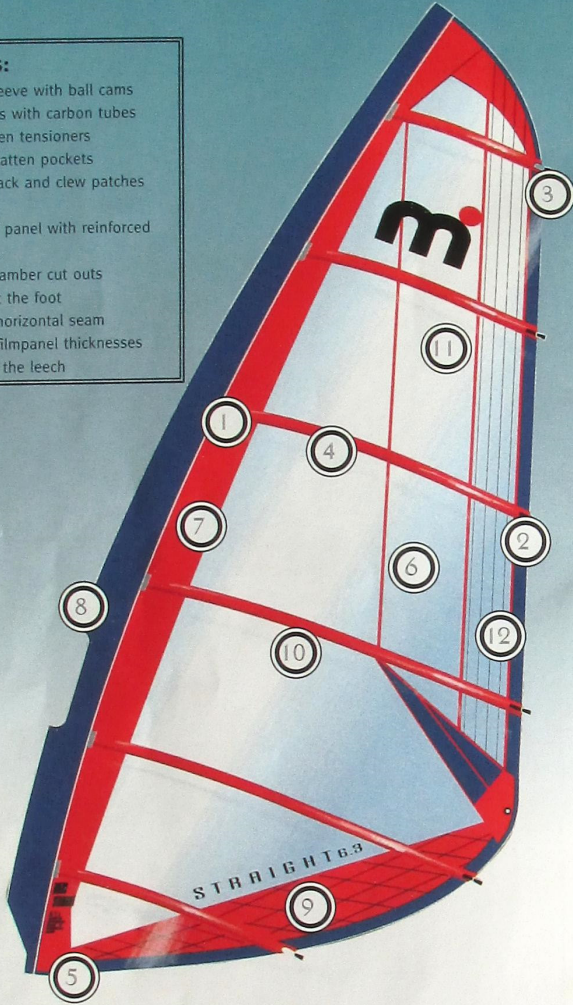
straight

Performance Characteristics:

The second generation of these high performance slalom sails, improved performance due to their combination of acceleration, increased low-end power, good control and high center-of-effort stability. This modern sail profile with the least aerodynamic resistance, allows a high top end speed without the need for sailor muscle power. The profile of the Straights can, by using different trim possibilities, be trimmed for strong or light wind. The mast sleeve is conical, which allows for easy waterstarts and excellent maneuver handling. The Ball Cams allow easy rigging and friction free rotation. New exclusive material in the tack, leech and Mylar cloth for less stretch, improve the life of the sail.

Sail Features:

1. Conical mast sleeve with ball cams
2. Tapered battens with carbon tubes
3. Powerlock batten tensioners
4. Double sided batten pockets
5. Double sided tack and clew patches
6. Tri-ply seam
7. Segmented luff panel with reinforced frontstrips
8. Aerodynamic camber cut outs
9. Tri ply scrim at the foot
10. Aerodynamic horizontal seam
11. Varying monofilm panel thicknesses
12. Warp scrim at the leech



Changing Characters*:

Style	Slalom	Slalom	Slalom/Race	Race/Slalom	Race
Size	5-3	5,8	6,3	6,8	7-3
Battens	6	6	6	6	7
Cams	2	3	3	3	4
Boom/cm	175-177	186-188	193-195	205-207	214-216
Mast/cm	442-444	467-469	476-478	489-491	498-500

Mast-Recommendations*:

4,8, 5-3	IMCS Constant Curve 25	Carbon Slalom 430
5,8, 6,3	IMCS Constant Curve 25	Carbon Slalom 460
6,8, 7-3	IMCS Constant Curve 28	Carbon Race 490

Boards:* Because of the changing characteristics of the Straight sails, Mistral recommends these sails on any speed oriented shortboard or longboard. Refer to board pages for the sail sizes recommended for your board.

* Recommendations may vary depending on your local conditions and windsurfing ability. For more detailed information, consult with your local authorized Mistral dealer.

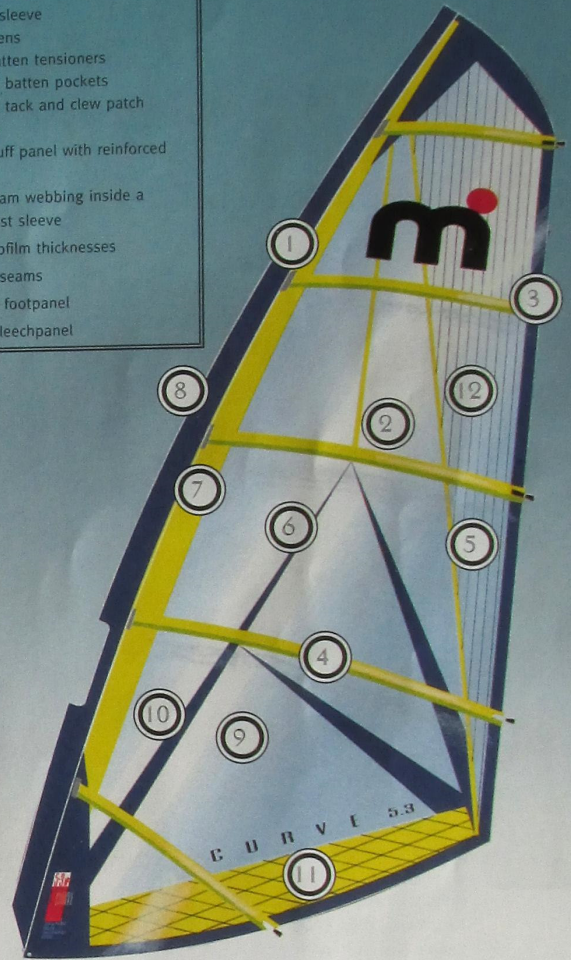
curve

Performance Characteristics:

The 1996 Curve combines endless control and dream handling with the power that you need for wave/slalom conditions. The acceleration of the big sails is especially good and they are able to run at high speeds. The smaller sails are ideal for regular waves, without losing planing or center-of-effort power. The Curve is the best bump and jump sail for European locations. The new materials Tri ply scrim and warp scrim make the sail near to unbreakable, without dramatically influencing the weight. Gives quick planing, highest speed and radical maneuvers even in gusty conditions or choppy water.

Sail Features:

1. Narrow mast sleeve
2. Tapered battens
3. Powerlock batten tensioners
4. Double-sided batten pockets
5. Double-sided tack and clew patch
6. Tri-ply seams
7. Segmented luff panel with reinforced front strip
8. Protective seam webbing inside a two-piece mast sleeve
9. Varying monofilm thicknesses
10. Multi-radial seams
11. Tri-ply scrim footpanel
12. Warp scrim leechpanel



Changing Characters*:

Style	Wave	Wave	Euro-Wave	Euro-Wave	Wave/Slalom
Size	3-7	4-2	4-7	5-2	5-7
Battens	5	5	5	5	5
Cams	-	-	-	-	-
Boom/cm	147-149	155-157	162-164	169-171	179-181
Mast/cm	385-387	410-412	428-430	449-451	464-466

Mast-Recommendations*:

3-7, 4-2, 4-7	IMCS Constant Curve 23	Carbon Wave 430
5-2, 5-7	IMCS Constant Curve 25	Carbon Wave 460

Boards:* Because of the changing characteristics of the Curve sails, Mistral recommends these sails on any wave or maneuver oriented shortboard. Refer to board pages for the sail sizes recommended for your board.

* Recommendations may vary depending on your local conditions and windsurfing ability. For more detailed information, consult with your local authorized Mistral dealer.

accessories

1. Sailbag 220 padded Sailbag with an extra padded floor and a very strong, robust zipper. It is big enough for 5 - 6 sails up to 7,5 m². Extra strong water-proof nylon, extremely robust straps.

2. Boombag padded This symmetric bag has enough volume for up to 5 booms. Additionally you can store smaller wave sails, mast extensions or wetsuits in the bag. Thick zippers and heavy duty finish are standard for this professional product.

3. Boardbag Double Professional boardbag for two boards with a max. length of 3 m. Additionally you can store sails, masts and booms. Tensioning straps, extra edge protectors, padded ends and extra strong zippers guarantee an absolutely risk free transportation.

4. Gear Bag This large windsurf bag has enough room for harnesses, wetsuits, mast extensions, fins and the other necessary things you need for windsurfing. Highlight: The gearbag can be also used as a backpack, the straps are stowed in the padded bottom of the bag.

4. Waist Harness Classic harness with a lot of extra features. An integrated neoprene waist strap prevents the harness from slipping. Neoprene padded edges and the flexible back support made of PE make it more comfortable.

5. Regatta Buoyancy Vest The new version has been even improved on last year. Straps on the inside with quick-release buckles stop the vest from slipping. Thick neoprene waist belt offers further isolation and tight fit. The pre-shaped body guarantees the perfect fit in all typical windsurf situations.

6. Office Bag The bag for big business. Exactly produced for a laptop and to fit A4 files. The bag is completely padded.

7. Lines:
clip set - the easiest and fastest system on the market. Adjustable while sailing.
adjustable - non-swinging straps with safe and easy fixation with additional velcro.
Quick Fix - classic non-swinging straps. The lines are not fixed to the straps, so the tubes can be changed easily.

8. Mastfoot-protector
 For double protection in radical situations. Doesn't bend!

9. Hip bag Just large enough to store a can of beer, a sandwich, passport and an extra T-shirt.

10. Mastbag padded Padded mastbag for up to 4 bases and tops with a length up to 5 meters. Thanks to the thick padding and high quality nylon, this bag does not start flapping when it's on a car roof.

11. Jumbo Bag The jumbo bag impresses with its new and innovative design. The compact form allows easy transportation and the hidden shoulder straps allow to use as a very large backpack.

12. Backpack This backpack is very versatile for biking, hiking, beaching, beergardening or as hand luggage for frequent flyers. There's an additional zipper from the back for the main compartment to reach the „hidden secrets“ more easily without unpacking the whole stuff. With large frontpocket.

